

PLANT NUTRITION
WATER SOLUBLE

TIMAC AGRO TECHNOLOGY

Our patented formulas are derived from nearly 60 years of research and development in plant extract technology. Through precise methods, our extracts are evaluated for their specific effects at each stage of crop development. By enriching selected extracts with macro- and micronutrients, we create bionutritional formulas that meet the ever-changing needs of the crop. Better yield and quality benefit our customers and are the result of improved emergence, vegetative growth, and reproductive performance.

As a company, our mission is to improve agriculture by focusing on four major areas of service to growers:

- Relentless innovation
- Flexible manufacturing
- Optimized applications
- Partners in the field

FEATURES

The KSC line of water-soluble fertilizers are a combination of high-quality, low salt nutrients and our patented Phytactyl Complex. They are for fertigation or hydroponics in intensive crop production. The low salt index and low chloride content is safer for seedlings and allows better water and nutrient uptake. Available in 6 different formulations that are specifically catered to diverse growing condition and plant growth stages.

KEY BENEFITS

- Highly soluble, low salt and low chlorine content allows for improved ionic transport and tolerance to osmotic and salinity stress
- Buffered formulas optimize nutrient absorption without decreasing irrigation water pH
- Six formulas that contain a range of analyses to allow for flexibility through the season
- Formulated with our patented Phytactyl Complex



APPLICATION

Minimum application rate should be 8-42 lbs/ac of KSC per week split over 1 to 5 applications. Application rate and timings are situation, crop and grower specific. Please refer to tissue tests or the advice of your local Timac Agro representative for specific recommendations.

DILUTION: Dilute KSC Phytactyl in the mother solution with a concentration of 10-20% or 1-2 lbs/gallon. This dilution should be considered as a guideline and should be adapted to the chemical characteristics of the irrigation water.

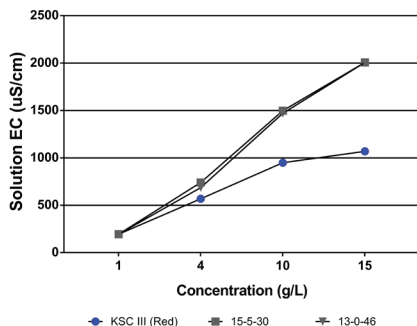
COMPATIBILITY: KSC Phytactyl is compatible with most soluble fertilizers. DO NOT mix with products containing Calcium. DO NOT acidify mother solution below a pH of 6.

PACKAGING SIZE

- 55.125 lbs

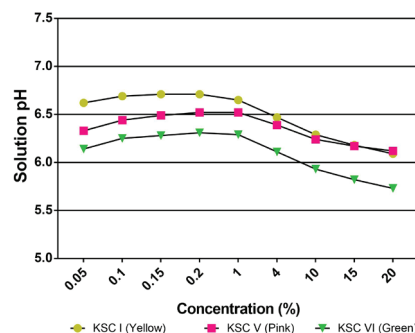


Electrical Conductivity Comparison of KSC vs. Commodities



KSC's lower salt content ensures higher nutrient efficiency and has less impact on the soil.*

KSC Phytactyl Effects on Solution pH

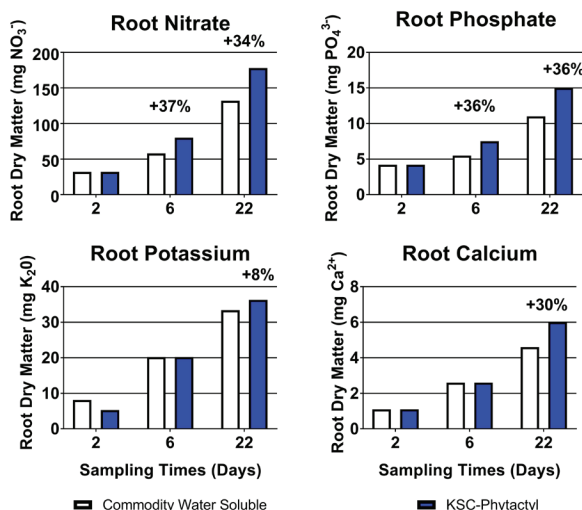


KSC has a buffer that prevents acidification at high use concentrations.*

Flexible Formulas to Match Plant and Soil Requirements

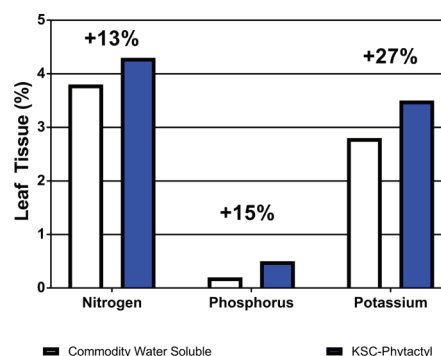
PRODUCT	N	P	K	Ca	Mg	S	B	Cu	Fe	Mn	Mo	Zn	Objectives
KSC I	14	40	5			13	0.1	0.05	0.1		0.01	0.1	Rooting and pre-flowering/fruit set
KSC IV		32	40			4.4	0.1		0.1		0.1		Fruit set and development
KSC V	8	16	42				0.1		0.1	0.05		0.1	Development, weight gain and maturation
KSC VI	14	12	14			35	0.1	0.1	0.1	0.1		0.1	Development, weight gain and maturation
KSC VII	15		9	14									Weight gain and fruit quality
KSC MicroMix					9	11.2	0.5	0.5	2.5	2	0.2	1.5	Micronutrient deficiencies

Effect of KSC on nutrient uptake



The four charts above demonstrate the kinetics of nutrient uptake in hydroponic lettuce. KSC demonstrated faster and improved nutrient uptake.*

KSC Phytactyl Effects on Nutrient Mobilization



This trial was conducted under hydroponic conditions on lettuce. KSC's high quality nutrients and the patented Phytactyl Complex lead higher uptake of N, P, and K in the leaf tissue.*

*Source: Roullier Group R&D CMI, St. Malo France, 2005